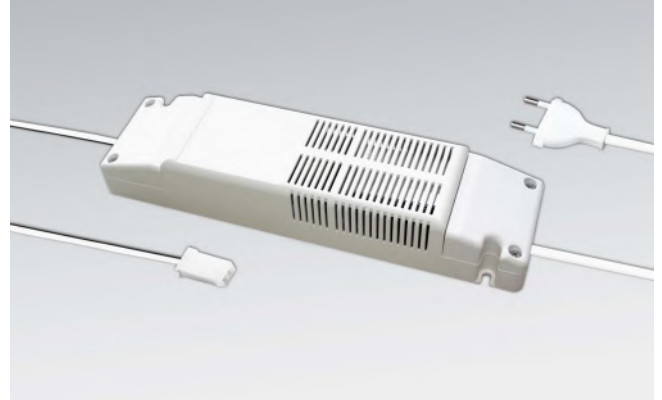


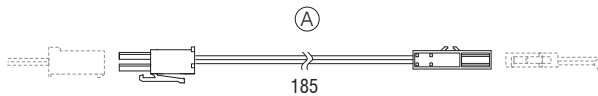
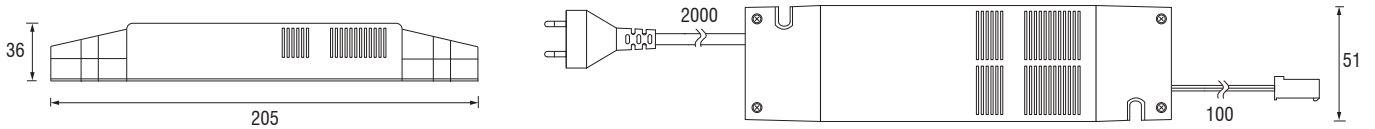
# DRIVER 48W

## LED 12V IN 220 ÷ 240V

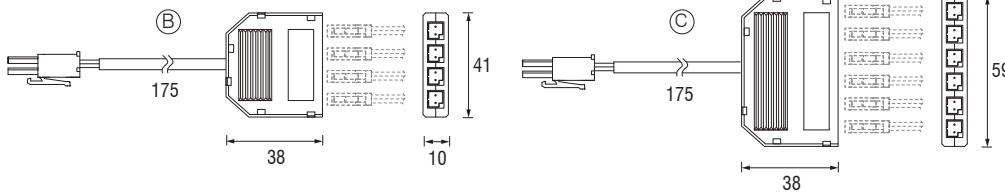
- IT** Driver per LED con cavo e spina - Tipo indipendente per uso interno, tensione di uscita costante 12V; protetto contro il corto circuito e il sovraccarico.
- EN** LED driver with cable and plug - Independent type for internal use, constant exit voltage 12V, protected against short circuit and overload.
- DE** LED-Konverter mit Kabel und Stecker - Unabhängige Konverter mit staendiger Ausgangsspannung 12V, kurzschlussfest und ueberbelastungsgeschuetzt.



CE ENE SELV



(A) Cavo per connessione singola  
Single connection cable  
Einzelverbindungskabel



(B) Distributore a 4 uscite  
4-way distribution box  
4-fach Verteiler



(C) Distributore a 6 uscite  
6-way distribution box  
6-fach Verteiler

Alimentatore - Driver - LED-Konverter				Imballo - Packaging - Verpackung			
V IN	Hz	V OUT	W	Codice - Part no. - Artikel-Nr.	Pcs	Kg	mm
220V ÷ 240V	50...60Hz	12V	48W	3T492402	1	0,375	50x60x220
Accessori - Accessories - Zubehör				Codice - Part no. - Artikel-Nr.	Pcs	Kg	
A) Prolunga / A) Extension / A) Verlängerungskabel				6LC10017	1	0,004	
B) 4 uscite / B) 4 Way / B) 4-fach				1T3003	1	0,020	
C) 6 uscite / C) 6 Way / C) 6-fach				1T3004	1	0,022	

Dimensioni in millimetri (mm) / Dimensions in Millimeters (mm) / Dimensionen in Millimetern (mm)

Compatibile con prodotti LED 12V  
Compatible with 12V LED products / Kompatibel mit 12V LED Produkten

